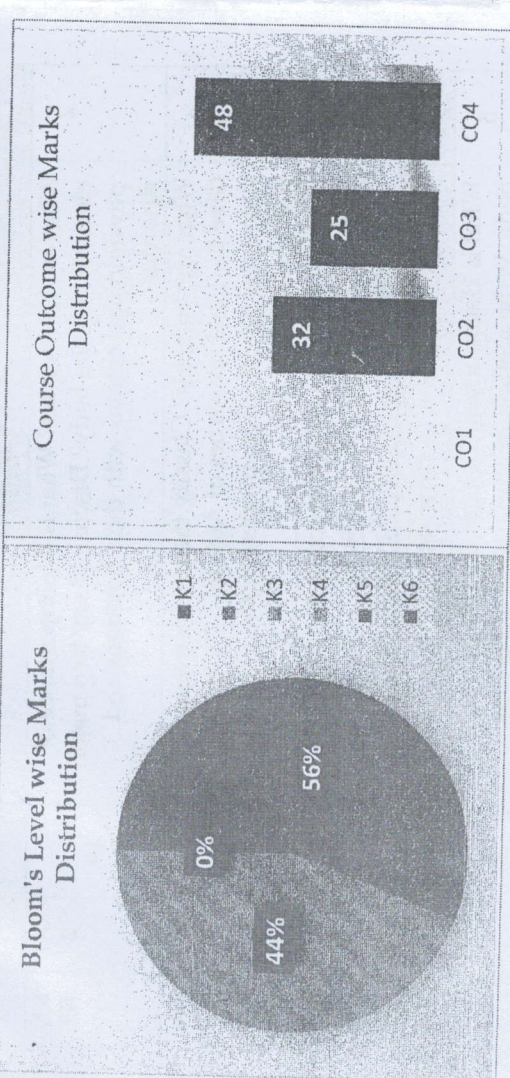


12	Write a short note on Indian Pharmacopoeia.?	5	CO4	K1, K2	PO2
13	Define an impurity and give in brief the sources of Impurities?	5	CO4	K1, K2	PO1 0

CO - Course Outcomes	KL - Knowledge Level	PO - Program Outcome
CO1	Elucidate the structure, name and the type of isomerism of the organic compound	
CO2	Understand the reaction, name the reaction and orientation of reactions	
CO3	Account for reactivity/stability of compounds,	
CO4	Identify/confirm the identification of organic compound	

GRAPHICAL REPRESENTATION



16



End Term Examination
School of Health & Allied Science

Branch	Pharmacy	Program	B. Pharmacy
Subject Name	Pharmaceutical Inorganic Chemistry	Semester	I
		Year	2023/Odd
Time: 3 Hour Max. Marks : 75	<ul style="list-style-type: none"> Start writing from 2nd page onwards; don't write on the 1st Page Backside Answer all Questions of Section A (Compulsory) Answer Any Two out of Three of Section B Answer Any Seven out of Nine of Section C Possession of <u>Mobile Phones</u> or any kind of <u>Written Material, Arguments with the Invigilator or Discussing with Co-Student</u> will come under <u>Unfair Means</u> and will <u>Result in the Cancellation of the Papers.</u> 		
Knowledge Level (KL)	K1 : Remembering K2 : Understanding	K3 : Applying K4 : Analysing	K5 : Evaluating K6 : Creating

Section A (Each question Carry 01 Marks from Q1-i to Q1-xx) - 20 Marks

Q. No.1	QUESTIONS	Marks	COs	KL	PO
i	Example of Ant-acid a) Sodium bicarbonate b) Calcium hydroxide c) Magnesium sulphate d) Arsenious acid	1	CO3	K1	PO1
ii	Thioglycolic acid is used for the limit test of a) Iron b) Sulphur c) Lead d) Chlorides	1	CO3	K1	PO2
iii	A combination of antacids is Used because a) Reduces constipation effect b) Reduce laxative action c) Produces synergistic action d) All the above	1	CO4	K1	PO2
iv	Lubricant cathartics act by a) Increasing bulk of intestinal content b) Creasing osmotic pressure in the GIT tract c) Smooth clearance & lubricating fecal matter d) None of the above	1	CO3	K1	PO2
v	Extracellular fluid includes a) Vascular fluid only b) Intestinal and vascular fluid c) Intestinal fluid only	1	CO4	K1	PO2

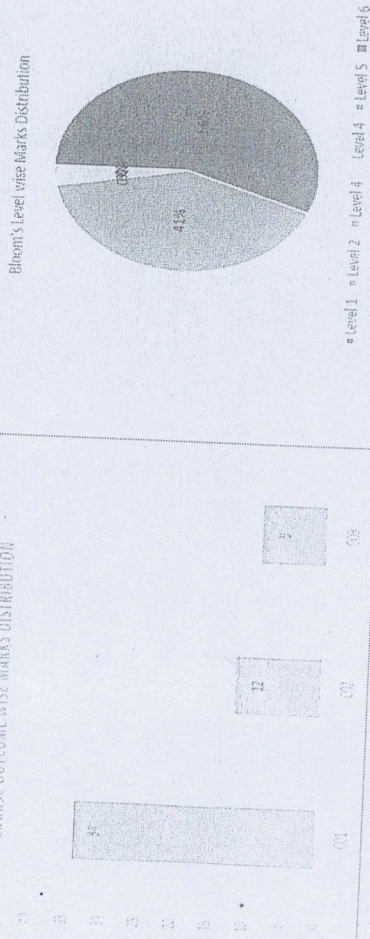
vi	Color produced in mercuric chloride Paper in a limit test of arsenic a) Red b) Yellow c) Pink d) Green	CO4	K1	PO2	1
vii	Standard Solution of Arsenic contains a) Arsenic trioxide b) Arsenic c) Arsenic oxide d) Arsenious acid	CO3	K1	PO2	1
viii	Thioglycolic acid is used for the limit test of a) Iron b) Sulphur c) Lead d) Chlorides	CO4	K1	PO1	1
ix	Absence of hydrochloric acid in stomach is known as a) Chlorhydria b) Achlorhydria c) Acidity d) Peptic ulcer	CO3	K1	PO2	1
x	Which is systemic antacid a) Sodium bicarbonate b) Aluminum phosphate c) Calcium Carbonate d) Magnesium Carbonate	CO3	K1	PO2	1
xi	The substance which are used for cleaning the teeth are a) Mouthwash b) Dental Cement c) Anticaries Agent d) Dentifrices	CO4	K1	PO1	1
xii	Antimicrobial agents that are applied to the surface of objects to destroy microorganisms are known as a) Antiseptic b) Disinfectant c) Germicides d) Sanitizer	CO4	K1	PO1	1
xiii	Silver nitrate is used for the limit test of a) Iron b) Sulphur c) Lead d) Chloride	CO3	K1	PO2	1
xiv	What is the function of Urinary Acidifiers? a) Control pH in Urine b) Control pH in Stomach c) Control pH in body parts d) All of these	CO3	K1	PO1	1
xv	Achlorhydria is a) No HCl production b) Reduced HCl production c) Excess HCl production d) none of the above	CO3	K1	PO2	1
xvi	AgNO ₃ React with Chloride Impurity to form a) AgCl b) Curdy white ppt c) Both a&b d) None of the above	CO2	K1	PO1	1
xvii	Example of Expectorants a) Ammonium chloride b) Potassium citrate c) Potassium iodide d) None of these	CO2	K1	PO1	1

xviii	An antidote is an agent which a) Counteracts the poison b) Initiates the urination c) Ceases the acidity d) Precipitates the proteins	CO3	K1	PO2	1
xix	Hydrated Copper Sulphate occurs as a) Red in color b) White in color c) Blue in color d) Colorless	CO4	K1	PO1	1
xx	Antimicrobial agents that are applied to the surface of objects to destroy microorganisms are known as a) Antiseptic b) Disinfectant c) Germicides d) Sanitizer	CO4	K1	PO2	1
Section B Answer any Two out of Three [2 x 10 = 20 Marks]					
Q. No.	QUESTIONS	Marks	COs	KL	PO
2	What are Electrolytes? What is the importance of electrolyte in the body? Discuss of any two major physiological cations with their functions and disorder?	10	CO 2	K1, K2	PO1 0
3	What are Antacids? Classify them with examples. Give the ideal properties of Antacids. Write the synonyms, preparation, properties and uses of sodium bicarbonate?	10	CO 4	K1, K2	PO1 0
4	Write down the principle Reaction involved in the limit test for Chloride & Sulphate?	10	CO 2	K1, K2	PO5
Section C Answer any Seven out of Nine [7 x 5 = 35 Marks]					
Q. No.	QUESTIONS	Marks	COs	KL	PO
5	What is Haematinics? Discuss the role of Iron in the body. Write method of preparation of Ferrous Sulphate?	5	CO4	K1, K2	PO1
6	Derive the Henderson- Hassel Balch reaction?	5	CO3	K1, K2	PO1 0
7	What do you mean Buffer Action? Explain the mechanism of buffer action?	5	CO3	K1, K2	PO9
8	Explain Principle involve in limit test of Arsenic and draw the neat label diagram of gut Zeit apparatus?	5	CO3	K1, K2	PO1 0
9	Explain the theories of acids and bases with Reactions?	5	CO4	K1, K2	PO2
10	Write the synonyms, preparation, properties and uses of ammonium Chloride?	5	CO2	K1, K2	PO1 0
11	Define the term Achlorhydria, Acidifier, Radioactivity, Purgative & Antacid?	5	CO2	K1, K2	PO9

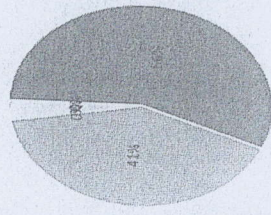
CO- Course Outcomes,	KL- Knowledge Level,	PO – Program Outcome
CO1	Know the classification and salient features of five kingdoms of life	
CO2	Understand the basic components of anatomy & physiology of plant	
CO3	Know understand the basic components of anatomy & physiology animal with special reference to human.	

GRAFICAL REPRESENTATION

COURSE OUTCOME WISE MARKS DISTRIBUTION



Bloom's Level wise Marks Distribution



ARKAJAIN University
Jharkhand

Branch		END TERM EXAMINATION	
Subject Name		School of Engineering & IT	
Bachelor in Pharmacy	Remedial Biology	Program	B. PHARMA
		Semester	I
		Year	2023/Odd
Time: 1:30 Hour	<ul style="list-style-type: none"> Start writing from 2nd page onwards; don't write on the 1st Page Backside Answer all Questions of Section A (Compulsory) Answer Any Five out of Six of Section B Answer Any Three out of Five of Section C 		
Max. Marks : 35	<ul style="list-style-type: none"> Possession of <u>Mobile Phones</u> or any kind of <u>Written Material, Arguments with the Invigilator or Discussing with Co-Student</u> will come under <u>Unfair Means</u> and will <u>Result in the Cancellation of the Papers.</u> 		
Knowledge Level (KL)	K1 : Remembering	K3 : Applying	K5 : Evaluating
	K2 : Understanding	K4 : Analysing	K6 : Creating

Section A (Each question Carry 01 Marks from Q1-i to Q1-x) – 10 Marks

Q. N1	QUESTIONS	Marks	COs	KL	PO
i	Ptyalin is secreted from a) Liver b) Salivary gland c) Pancreases d) Gall bladder	1	CO3	K1	PO1
ii	The volume of air breath in and out during normal breathing is called a) Vital capacity b) Tidal volume c) Residual volume d) Carrying capacity	1	CO3	K1	PO1
iii	Which of the following nutrient is a micro nutrient? a) Carbon b) Hydrogen c) Boron d) Oxygen	1	CO2	K2	PO1
iv	If cells shrink, after being placed in solution, the solution is a) Isotonic b) Hypotonic c) Hypertonic d) Neutral	1	CO2	K4	PO1
v	Minerals absorbed by root move to the leaf through a) Xylem b) Phloem c) Sieve tube d) None of the above	1	CO2	K1	PO1
vi	Urea is the chief nitrogenous waste in a) Fish b) Bird c) Human d) Fish	1	CO3	K1	PO1
vii	The hormone that controls the level of calcium and phosphorus in blood is secreted by a) Thyroid gland b) Parathyroid gland c) Pituitary gland d) Thymus	1	CO3	K1	PO1

viii	Antidiuretic hormone (ADH) also called as a) Oxytocin b) Vasopressin c) Renin d) Calcitonin	1	CO3	K1	PO1
ix	Chemically hormones are a) Steroids b) Proteins c) Biogenic amines d) All of these	1	CO3	K1	PO1
x	Who proposed "Fluid mosaic model" for plasma membrane? a) Cramer and Naegeli b) Singer and Nicholson c) Denielli and Davson d) Gorter and Grende	1	CO1	K1	PO1

Section B (Answer any FIVE out of SIX) – 10 Marks

(Each question 2 Marks)

Q. No.	QUESTIONS	Marks	COs	KL	PO
2	What is Uricotelism? Give Two example of Uricotelism animal.	2	CO3	K1	PO1
3	What are five kingdom classifications?	2	CO1	K1	PO1
4	Write the characteristics and functions of root.	2	CO2	K1	PO1
5	Describe lung capacity.	2	CO3	K2	PO1
6	What is haemopoiesis? Write the different types of blood cell.	2	CO3	K2	PO1
7	Draw a labelled diagram of human Heart.	2	CO3	K1	PO1

Section C (Answer any THREE out of FIVE) – 15 Marks

(Each question Carry 5 Marks)

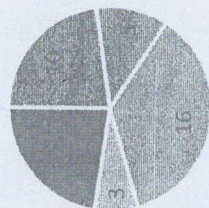
Q. No.	QUESTIONS	Marks	COs	KL	PO
8	Describe the mechanism of urine formation.	5	CO3	K2	PO1
9	Describe the functions of hormones released by anterior pituitary gland.	5	CO3	K1	PO1
10	What is Endoplasmic reticulum? Write the types and functions of Endoplasmic reticulum.	5	CO1	K1	PO1
11	What is digestion? Discuss the digestion of carbohydrate in the alimentary canal.	5	CO3	K2	PO1
12	What is nutrient? Describe the functions of three micronutrients.	5	CO2	K2	PO1

CO - Course Outcomes, KL - Knowledge Level, PO - Program Outcome

CO1	Apply mathematical concepts and principles to perform computations for Pharmaceutical Sciences.
CO2	Create, use and analyse mathematical representations and mathematical relationships.
CO3	Communicate mathematical knowledge and understanding to help in the field of Clinical Pharmacy.
CO4	Perform abstract mathematical reasoning.
CO5	Analyse the logic of a given problem.

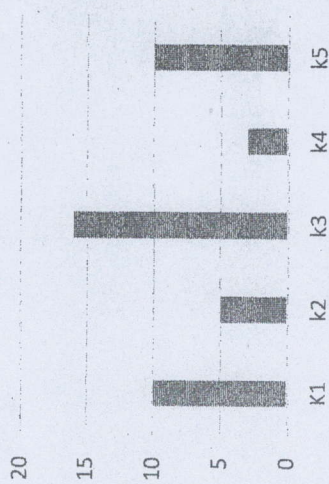
GRAFICAL REPRESENTATION

Bloom's Level wise Marks Distribution



■ K1 ■ K2 ■ K3 ■ K4 ■ K5

Course Outcome Wise Marks Distribution



ARKAJAIN
University
Jharkhand

End Term Examination
School of Health & Allied Science

Branch	Bachelor of Pharmacy	Program	B. Pharmacy
Subject Name	Remedial Mathematics.	Semester	I
		Year	2023/Odd
Time: 1:30 Hour Max. Marks : 35	<ul style="list-style-type: none"> Start writing from 2nd page onwards; don't write on the 1st Page Backside Answer all Questions of Section A (Compulsory) Answer Any Five out of Six of Section B Answer Any Three out of Five of Section C Possession of Mobile Phones or any kind of Written Material, Arguments with the Invigilator or Discussing with Co-Student will come under Unfair Means and will result in the Cancellation of the Papers. 		
Knowledge Level (KL)	K1 : Remembering K2 : Understanding	K3 : Applying K4 : Analysing	K5 : Evaluating K6 : Creating

Section A (Each question Carry 01 Marks from Q1-i to Q1-x) - 10 Marks

Q. N1	QUESTIONS	Marks	COs	KL	PO
i	Find the value of $\log_3^2 + \log_4^3 - \log_2^1$.	1	CO1	K5	PO2
ii	Evaluate $\lim_{x \rightarrow 0} \frac{\sin 3x}{x}$ and $\lim_{x \rightarrow 0} \frac{\tan 6x}{x}$.	1	CO1	K3	PO4
iii	Evaluate $\lim_{x \rightarrow 0} \frac{\tan 7x}{3x}$.	1	CO1	K5	PO3
iv	Define Transpose of the matrix.	1	CO3	K1	PO2
v	If $A = \begin{bmatrix} 1 & 3 \\ 2 & 1 \end{bmatrix}$ and $B = \begin{bmatrix} 2 & 1 \\ -2 & 1 \end{bmatrix}$ Find AB	1	CO3	K1	PO1
vi	Find the Derivative of $(\tan 10x)$.	1	CO3	K3	PO2
vii	Find The distance between the points A (-1, 6) and (3, 8).	1	CO2	K1	PO4
viii	Define Symmetric Matrix.	1	CO1	K5	PO3
ix	Evaluate $\lim_{x \rightarrow 3} \frac{x^4 - 81}{x - 3}$	1	CO1	K4	PO2
x	Evaluate $ 5A $ if $A = \begin{bmatrix} 1 & 3 \\ 4 & -1 \end{bmatrix}$.	1	CO1	K3	PO2

Section B Answer any FIVE out of SIX [5x 2 = 10 Marks]

Q. No.	QUESTIONS	Marks	COs	KL	PO
2	Find Derivative of $y = \frac{x^2+10x+5}{2x+4}$.	2	CO1	K5	PO2
3	Find the partial Fraction of $\frac{4x}{(2x+2)(x-1)}$	2	CO1	K3	PO4
4	Find the Derivative of $(\cos 2x) \times e^{5x}$.	2	CO2	K4	PO3
5	If $f(x) = x^2 - 3x + 4$ and $f(x) = f(2x+1)$ then find the value of x.	2	CO3	K1	PO2
6	If matrix $A = \begin{bmatrix} 4 & 8 & 9 \\ 1 & -4 & -3 \\ 2 & -1 & 3 \end{bmatrix}$ then find M_{13} and M_{31} .	2	CO3	K1	PO2
7	$\begin{vmatrix} 3x & 7 \\ -2 & 4 \end{vmatrix} = \begin{vmatrix} 18 & 7 \\ 16 & 4 \end{vmatrix}$ then find the value of x.	2	CO3	K3	PO2

Section C Answer any THREE out of FIVE [3 x 5 = 15 Marks]

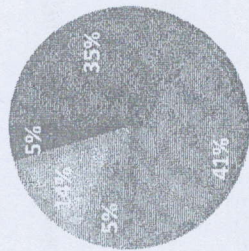
Q. No.	QUESTIONS	Marks	COs	KL	PO
8	Solve the system of equation. $x+y+z=3$ $x+2y+3z=4$ $x+4y+9z=6$	5	CO2	K3	PO2
9	Express the matrix $A = \begin{bmatrix} 2 & 3 & -1 \\ 4 & 1 & -4 \\ -3 & 2 & 3 \end{bmatrix}$ as the sum of symmetric and skew symmetric matrix	5	CO1	K5	PO4
10	Evaluate $\lim_{x \rightarrow 2} \frac{x^2-4}{\sqrt{3x-2}-\sqrt{x+2}}$.	5	CO1	K1	PO3
11	Find the partial fractions of $\frac{x+4}{(x+2)(x+3)(x-1)}$.	5	CO3	K1	PO2
12	Prove that $\begin{vmatrix} 1 & 1 & 1 \\ a & b & c \\ a^3 & b^3 & c^3 \end{vmatrix} = (a-b)(b-c)(c-a)(a+b+c)$	5	CO3	K2	PO2
13	Prove that $\log_{24}^{25} = 2\log_5 - 3\log_2 - \log_3$	5	CO5	K3	PO2

PO- Course Outcomes, KL- Knowledge Level, PO - Program Outcome

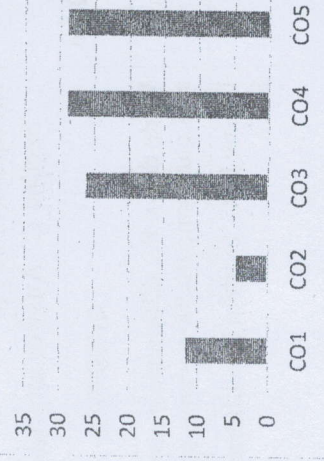
CO1	This subject explains the gross morphology, structure and function of various organs of the human body.
CO2	Describe the various homeostatic mechanisms and their imbalances.
CO3	It helps to identify the various tissues and organs of different systems of human body.
CO4	Performs the various experiments related to special senses and nervous systems.
CO5	Appreciate coordinated working pattern of different organs of each system.

GRAPHICAL REPRESENTATION

BLOOM'S LEVEL WISE MARKS DISTRIBUTION



COURSE OUTCOME WISE MARKS DISTRIBUTION



ARKAJAIN University Jharkhand		End Term Examination School of Health & Allied Science	
Branch	Bachelor in Pharmacy	Program	B. Pharmacy
Subject Name	Human Anatomy and Physiology-I	Semester	I
		Year	2023/Odd
Time: 3 Hour Max. Marks : 75	<ul style="list-style-type: none"> Start writing from 2nd page onwards; don't write on the 1st Page Backside Answer all Questions of Section A (Compulsory) Answer Any Two out of Three of Section B Answer Any Seven out of Nine of Section C Possession of Mobile Phones or any kind of Written Material, Arguments with the Invigilator or Discussing with Co-Student will come under Unfair Means and will result in the Cancellation of the Papers. 		
Knowledge Level (KL)	K1 : Remembering K2 : Understanding	K3 : Applying K4 : Analysing	K5 : Evaluating K6 : Creating

Section A (Each question Carry 01 Marks from Q1-i to Q1-xx) – 20 Marks

Q. N°	QUESTIONS	Marks	COs	KL	PO
i	The human vertebrae are classified as which type of bone? a) Long b) Irregular c) Flat d) Short	1	CO3	K1	PO 1
ii	The plasma membrane is mainly composed of a) Protein b) Lipids c) Phospholipids d) Cellulose	1	CO1	K1, K2	PO 1
iii	The region in the eyes where rods and cones are present a) Retina b) Cornea c) Choroid d) Sclera	1	CO4	K1, K2	PO 1
iv	Which of the following is not a lymphatic gland a) Spleen b) Thymus c) Tonsils d) Pancreas	1	CO3	K1, K2, K4	PO 1
v	Which cartilage is present at the joints of long bones? a) Elastic b) Hyaline c) Fibrous d) All	1	CO3	K1, K2, K4	PO 1
vi	Erythrocytes are formed in a) Red bone marrow b) Liver c) Spleen d) All of the above	1	CO3	K1, K2, K4	PO 1
vii	Clotting of blood is due to a) R.B.C b) Neutrophils	1	CO3	K1, K2	PO 1

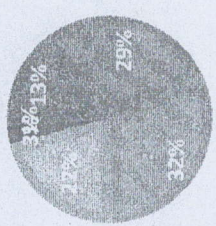
viii	The word Lub dub is related to a) Cardiac cycle b) Heart sound c) Cardiac output d) None of the above	1	CO3, CO5	K1, K2, K4	PO 1
ix	Which of the following cells are responsible for our skin color? a) Melanocytes b) Keratinocytes c) Merkel cells d) Langerhans cells	1	CO3	K1	PO 1
x	Cranial nerve IV is known as? a) Oculomotor b) Trigeminal c) Hypoglossal d) Trochlear	1	CO3, CO4	K1	PO 1
xi	A membrane in the inner ear that vibrates is known as _____. a) Eardrum b) Cochlea c) Pinna d) Auricle	1	CO3, CO4, CO5	K2	PO 1
xii	Cranial Nerve V is a) Facial nerve b) Olfactory nerve c) Vagus nerve d) Trigeminal nerve	1	CO3, CO4	K1	PO 1
xiii	Which of these bones are not a part of the axial skeleton? a) Clavicle b) Skull c) Sternum d) Ribs	1	CO3	K4	PO 1
xiv	How many vertebrae do humans possess? a) 34 b) 30 c) 26 d) 22	1	CO3	K1, K4	PO 1
xv	Which of the following cell organelles is found in animal cells but not in plant cells? a) Golgi Body b) Centrosome c) Nucleus d) All of the above	1	CO1	K1, K4	PO 1
xvi	How many pairs of cranial nerves are present? a) 12 b) 10 c) 13 d) 14	1	CO4	K1,	PO 1
xvii	Which of these is not a function of the skeletal system? a) Mineral storage b) Protection of organs c) Movement d) Metabolism	1	CO3	K4	PO 1
xviii	What is the function of olfactory nerve? a) Sense of smell b) Sense of hearing c) Sense of taste d) Maintaining balance	1	CO4	K4	PO 1
xix	Nucleus was first recognised by a) Robert Brown b) Robert Hook c) Robert Koch d) Fleming	1	CO1	K1	PO 1

xx	Which of the following nerve is a mixed nerve? a) Optic nerve b) Hypoglossal nerve c) Trochlear nerve d) None of the above	1	CO3, CO4	K1, K2	PC 1
Section B Answer any Two out of Three [2 x 10 = 20 Marks]					
Q. No.	QUESTIONS	Marks	COs	KL	PC
2	Define Tissue. Classify them. Explain in details about Epithelial Tissue.	10	CO3	K1, K2, K4	PC 1
3	Explain the structure of eye with a neat labelled diagram, along with its function.	10	CO4	K1, K2, K3	PC 1
4	Draw a neat labelled diagram of human heart. Explain in detail about the regulation of circulation of blood.	10	CO1, CO5	K1, K2	PC 1
Section C Answer any Seven out of Nine [7 x 5 = 35 Marks]					
Q. No.	QUESTIONS	Marks	COs	KL	PO
5	Write down the difference between sympathetic and parasympathetic nervous system.	05	CO4	K2	PO 1
6	Define ECG. Explain the different waves of ECG.	05	CO5	K1, K2, K4, K5	PO 1
7	Define artery and veins. Write down the function of pulmonary artery and vein.	05	CO1, CO5	K1, K2	PO 1
8	Write down the function of ear and tongue	05	CO4	K2	PO 1
9	What is integumentary system. Write in brief about the layers of skin.	05	CO3, CO4	K2	PO 1
10	Write short notes on lymph nodes.	05	CO3	K1, K2	PO 1
11	Define ABO system. Write notes on blood grouping and Rh factor.	05	CO2, CO5	K1, K2, K4, K5	PO 1
12	Short notes on neuromuscular junction.	05	CO3	K2	PO 1
13	Short notes on W.B.C	05	CO5	K1, K2	PO 1

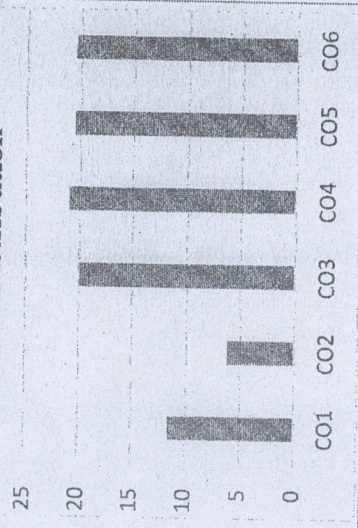
CO1	To understand the behavioral needs for a Pharmacist to function effectively in the
CO2	To know about the areas of pharmaceutical operation
CO3	Communicate effectively (Verbal and Non Verbal)
CO4	Effectively manage the team as a team player
CO5	To develop interview skills
CO6	To develop Leadership qualities and essentials

GRAFICAL REPRESENTATION


Bloom's level wise marks distribution



Course Outcome Wise Marks Distribution



■ K1 ■ K2 ■ K3 ■ K4 ■ K5 ■ K6

 ARKAJAIN University Jharkhand		End Term Examination School of Health & Allied Science	
Branch	Bachelor in Pharmacy	Program	B. Pharmacy
Subject Name	Communication skill	Semester	I
		Year	2023/Odd
Time: 1:30 Hour Max. Marks : 35	<ul style="list-style-type: none"> Start writing from 2nd page onwards; don't Write on the 1st Page Backside Answer all Questions of Section A (Compulsory) Answer Any Five out of Six of Section B Answer Any Three out of Five of Section C Possession of <u>Mobile Phones</u> or any kind of <u>Written Material, Arguments with the Invigilator or Discussing with Co-Student</u> will come under <u>Unfair Means</u> and will <u>Result in the Cancellation of the Papers.</u> 		
Knowledge Level (KL)	K1 : Remembering	K3 : Applying	K5 : Evaluating
	K2 : Understanding	K4 : Analysing	K6 : Creating

Section A (Each question Carry 01 Marks from Q1-i to Q1-x) – 20 Marks					
Q. No.	QUESTIONS	Marks	COs	KL	PO
1					
i	What is communication?	1	CO1, CO2, CO3	K2, K3, K4	PO3, PO4
ii	What are the 5 basic types of communication?	1	CO1, CO3, CO4, CO5, CO6	K1, K2	PO3, PO4
iii	Why basic communication is important?	1	CO1, CO3, CO4	K2, K3, K4	PO3, PO4
iv	What is the meaning of basic communications?	1	CO1, CO2, CO3	K1, K2, K3	PO3, PO4
v	What are elements of communication?	1	CO3, CO4, CO5, CO6	K1, K2, K4	PO3, PO4
vi	What is communication barrier?	1	CO1C, CO3, CO4.5, CO6	K1, K2, K3	PO3, PO4
vii	What is oral communication?	1	CO1C, CO3, CO4.5, CO6	K2, K3	PO3, PO4
viii	What is formal communication?	1	CO3, CO4, CO5, CO6	K2, K3, K4	PO3, PO4
ix	Write are the most Important elements for effective writing skill?	1	CO3, CO4.5, CO6	K1, K2, K3, K6	PO3, PO4
x	What is the basic listening skill?	1	CO1, CO3, CO4	K2, K3, K4, 4,6	PO3, PO4

Section B Answer any Five out of Six [5x2 = 10 Marks]

Q.No.	QUESTIONS	Marks	COs	KL	PO
2	Write the elements of communication and state two examples.	2	CO1, CO2, CO3, CO4, CO5, CO6	K1, K2, K3, K4	PO3, PO4
3	What are the points to remember for any interview? Discuss.	2	CO4, CO5, CO6	K2, K3, K4	PO3, PO4
4	Communication skills in group discussions are very much need. How?	2	CO1, CO2, CO3, CO4, CO5, CO6	K1, K2, K3, K4, K5	PO3, PO4
5	Mentions the importance for interview.	2	CO5	K2, K3, K4, K5	PO3, PO4
6	What is a GD?	2	CO3, CO4, CO5, CO6	K2, K3, K4	PO3, PO4
7	What are the factors needed to be a good speaker?	2	CO4, CO6	K2, K3, K4	PO3, PO4

Section C Answer any Three out of Five [3x 5 = 15 Marks]

Q.No.	QUESTIONS	Marks	COs	KL	PO
8	Define communication skills and discuss the importance and its different types.	5	CO1, CO2, CO3, CO4, CO5, CO6	K1, K2, K3, K4	PO3, PO4
9	Discuss the barriers to communication with examples.	5	CO3, CO4, CO6	K1, K2, K3, K4	PO3, PO4
10	Elements of communication skills are very significant, discuss.	5	CO1, CO3, CO4, CO5, CO6	K2, K3, K4	PO3, PO4
11	What are the elements of basic written communication?	5	CO3, CO4, CO5, CO6	K2, K3	PO3, PO4
12	What are the purpose of learning interview skills?	5	CO5	K3	PO3, PO4